

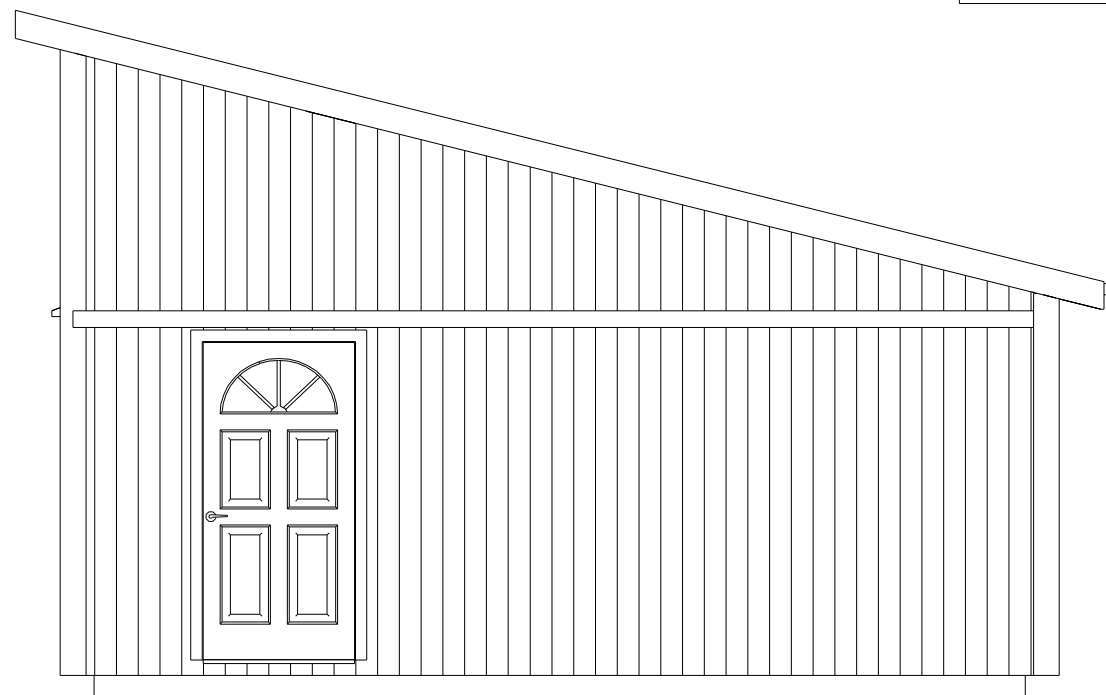
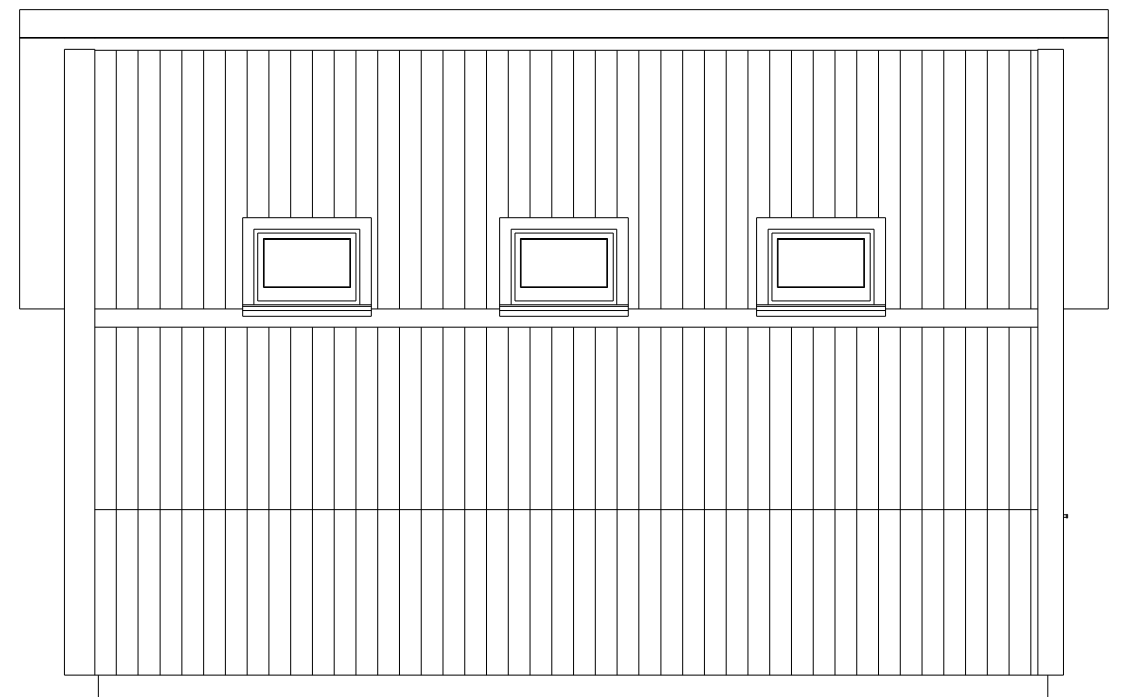
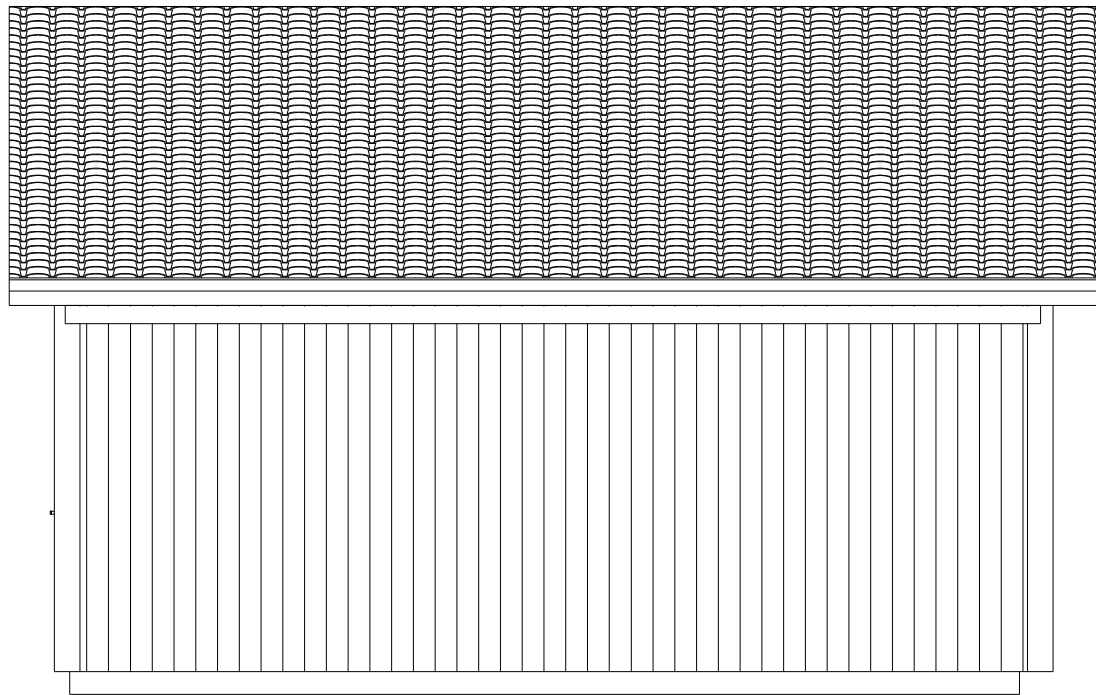
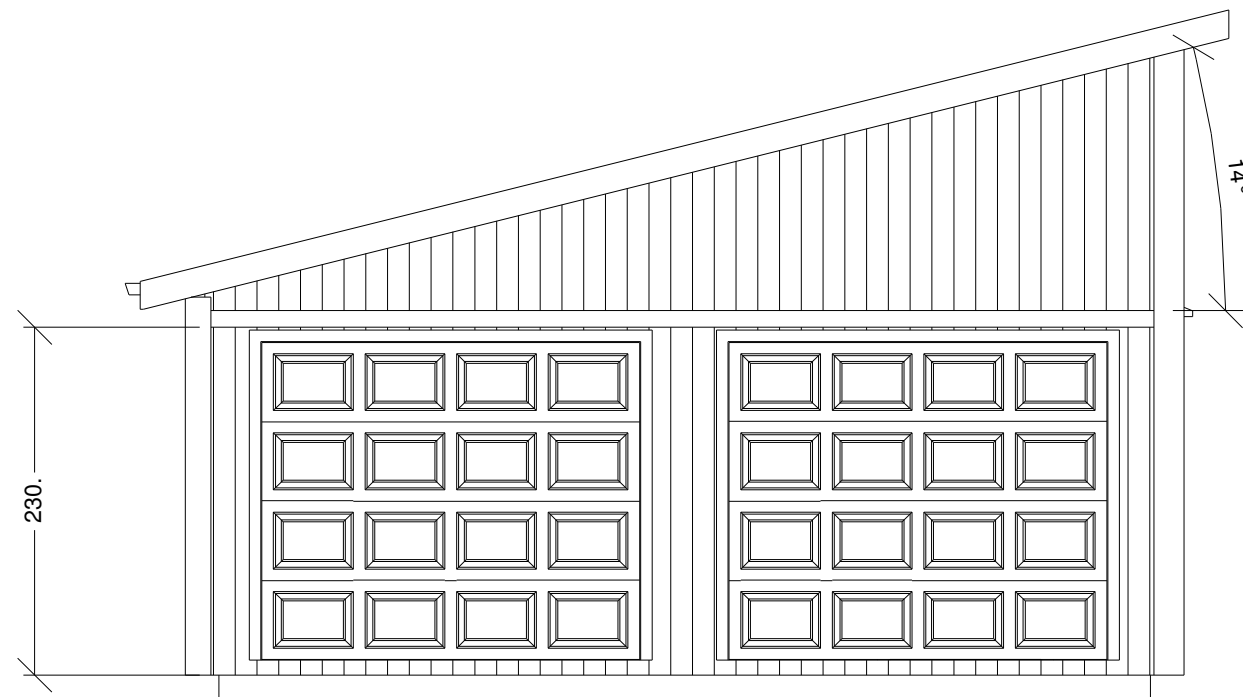
Objekt: linejung_garagelayout Sida: 1

Dat: 2006-08-18



Nystrandsgatan 23
 633 46 Eskilstuna
 Tel: 016 - 12 49 01
 Fax: 016 - 12 58 90
 E-post: info@husinvest.se
 www.husinvest.se

Fil:
 F:\Husinvest\Ritningar\
 linejung_garagelayout.l
 ayout



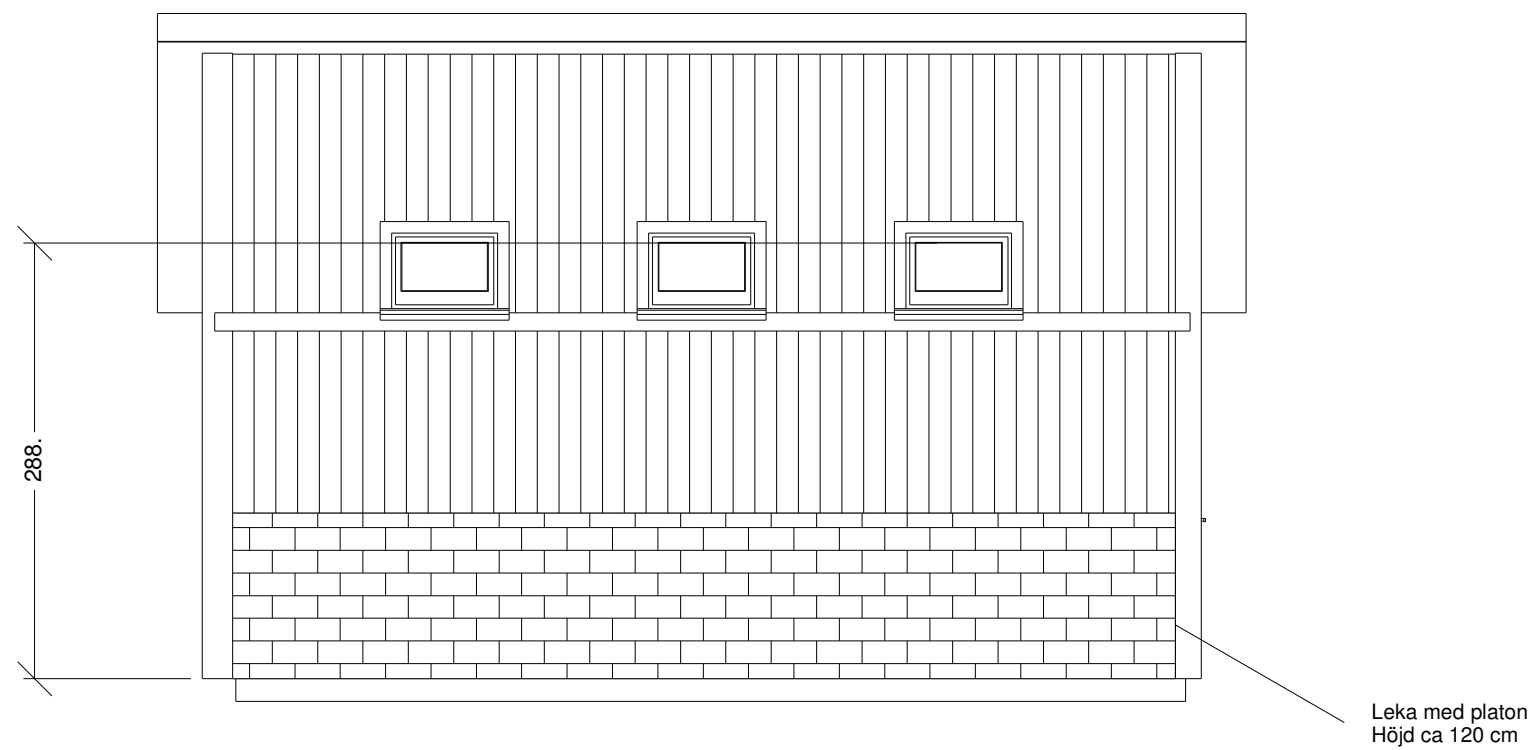
Objekt: linejung_garagelayout Sida: 2

Dat: 2006-08-18



Nystrandsgatan 23
 633 46 Eskilstuna
 Tel: 016 - 12 49 01
 Fax: 016 - 12 58 90
 E-post: info@husinvest.se
 www.husinvest.se

Fil:
 F:\Husinvest\Ritningar\
 linejung_garagelayout.l
 ayout



Objekt: linejung_garagelayout Sida: 3

Dat: 2006-08-18



Nystrandsgatan 23
633 46 Eskilstuna
Tel: 016 - 12 49 01
Fax: 016 - 12 58 90
E-post: info@husinvest.se
www.husinvest.se

Fil:
F:\Husinvest\Ritningar\
linejung_garagelayout.l
ayout